

Entwickler: Adrian Wilhelm

Assystem Germany GmbH | Gutenbergstraße 15. 10587 Berlin (Germany)

Sheet: /

File: VehicleBreakOut.sch

Title: ECU-STM Breakout Board

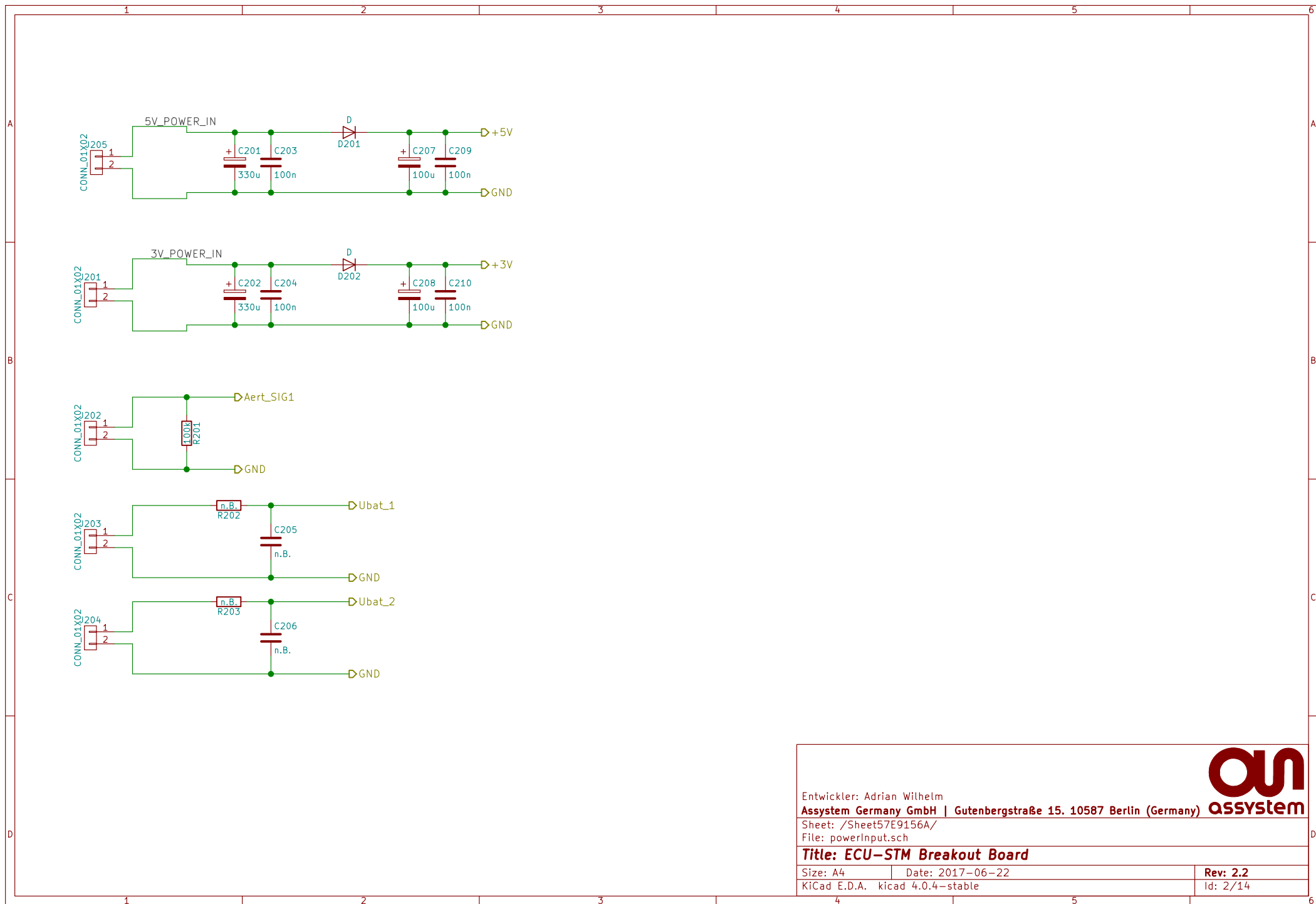
Size: A4 Date: 2017-06-22

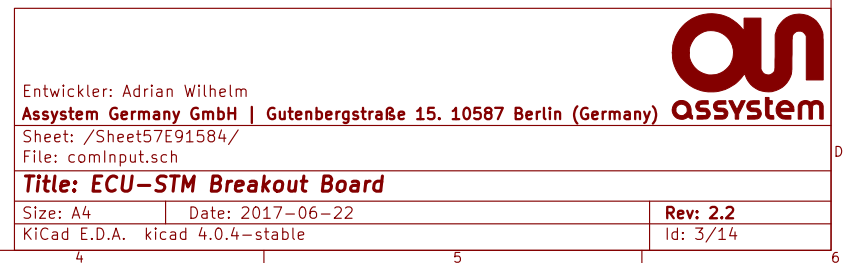
KiCad E.D.A. kicad 4.0.4-stable

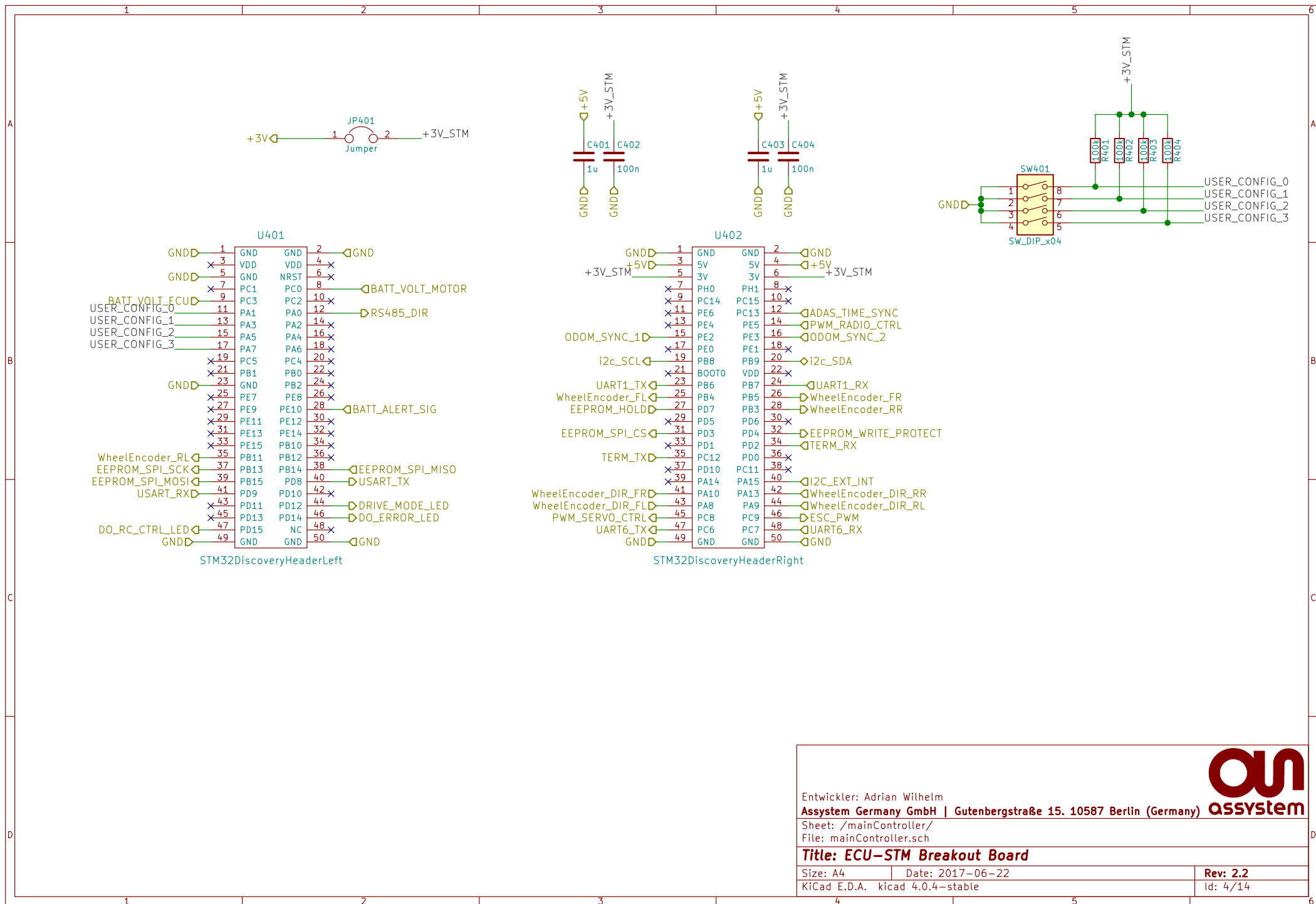
Rev: 2.2

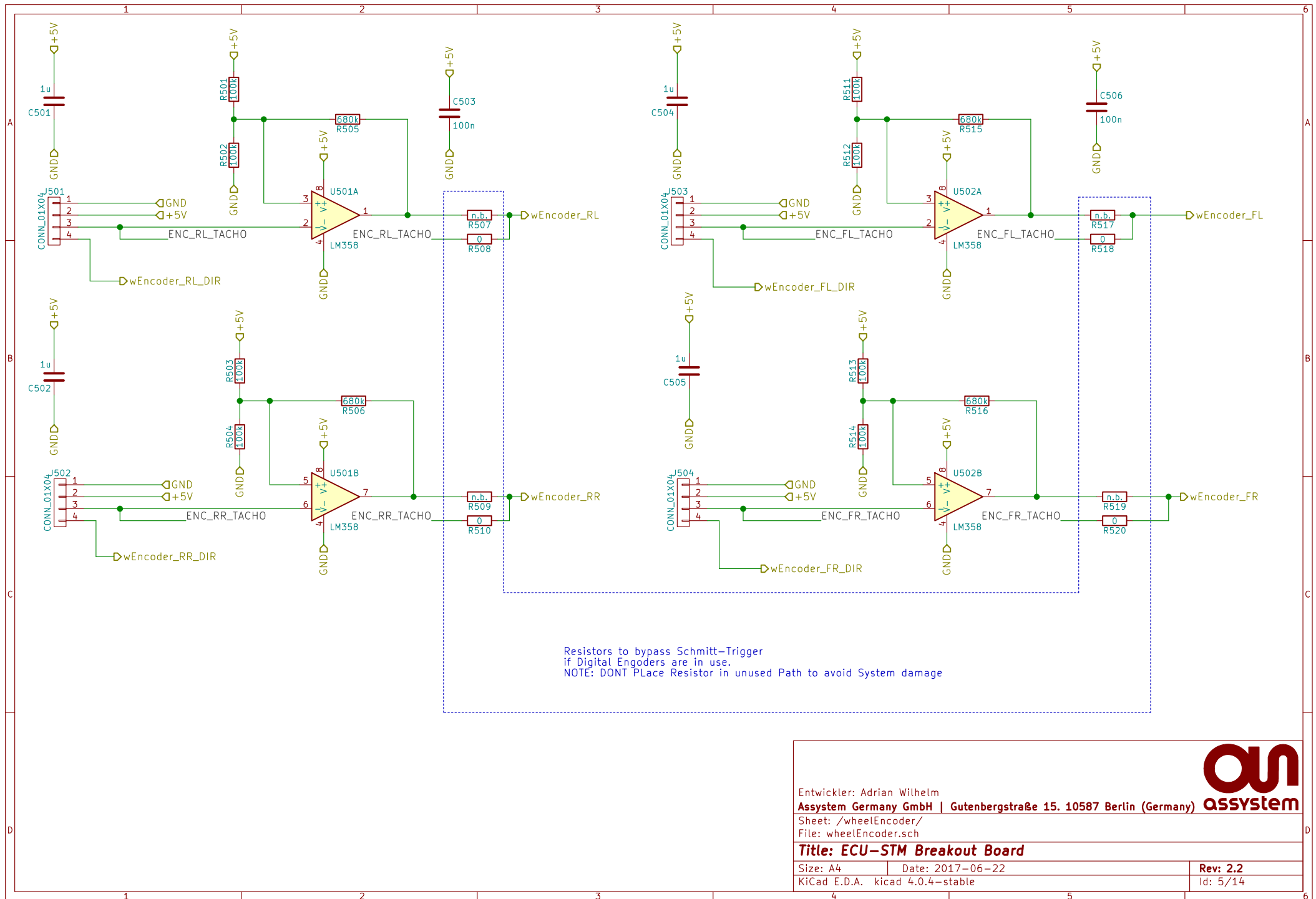
Id: 1/14











Entwickler: Adrian Wilhelm

Assystem Germany GmbH | Gutenbergstraße 15. 10587 Berlin (Germany)

Sheet: /wheelEncoder/

File: wheelEncoder.sch

Title: ECU-STM Breakout Board

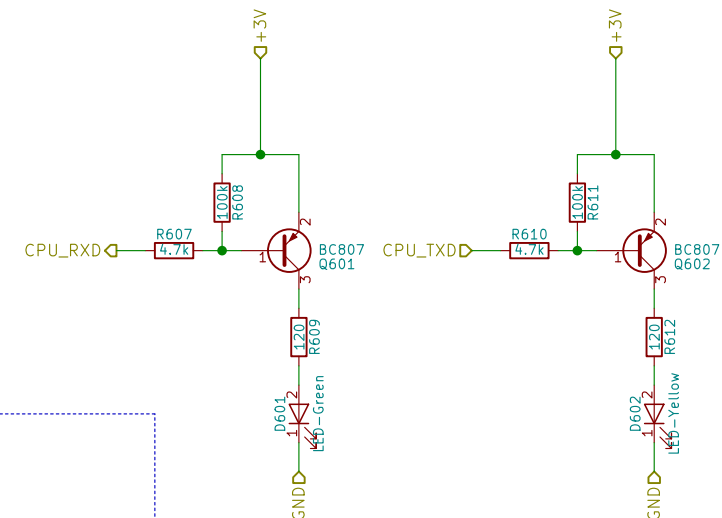
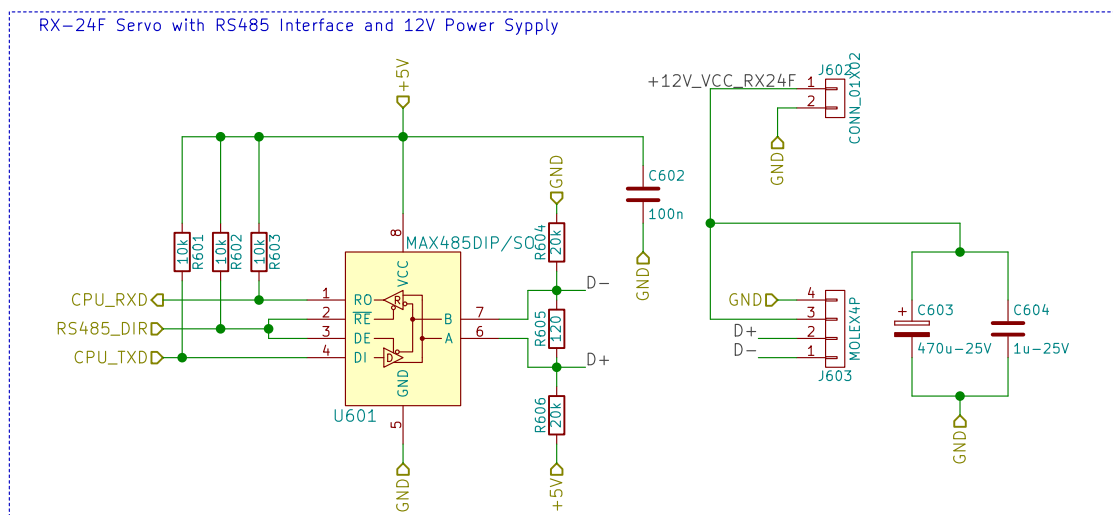
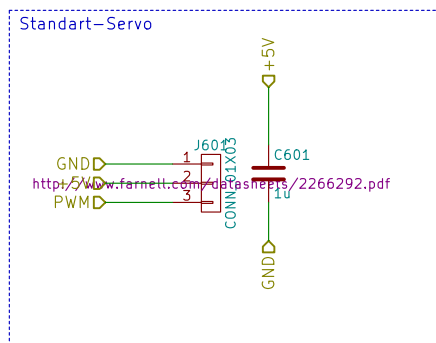
Size: A4 Date: 2017-06-22

KiCad E.D.A. kicad 4.0.4-stable

Rev: 2.2

Id: 5/14





Entwickler: Adrian Wilhelm

Assystem Germany GmbH | Gutenbergstraße 15, 10587 Berlin (Germany)

Sheet: /Servo/

File: servo.sch

Title: ECU-STM Breakout Board

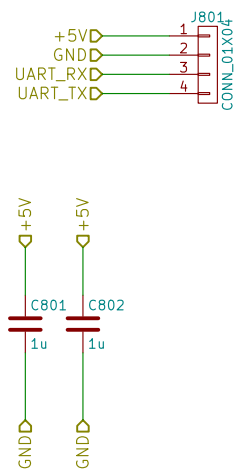
Size: A4 Date: 2017-06-22


KiCad E.D.A. kicad 4.0.4-stable

Rev: 2.2

Id: 6/14

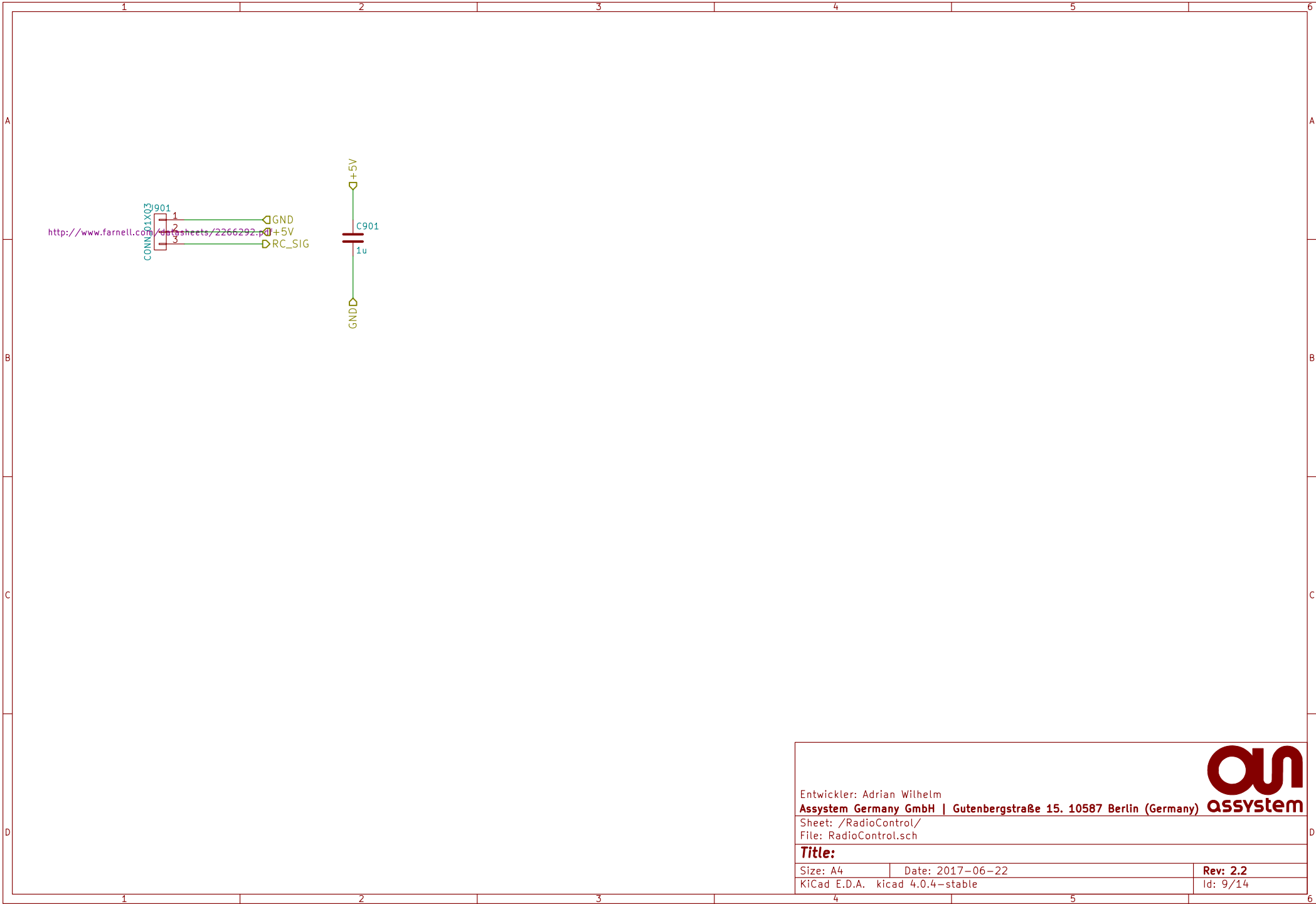


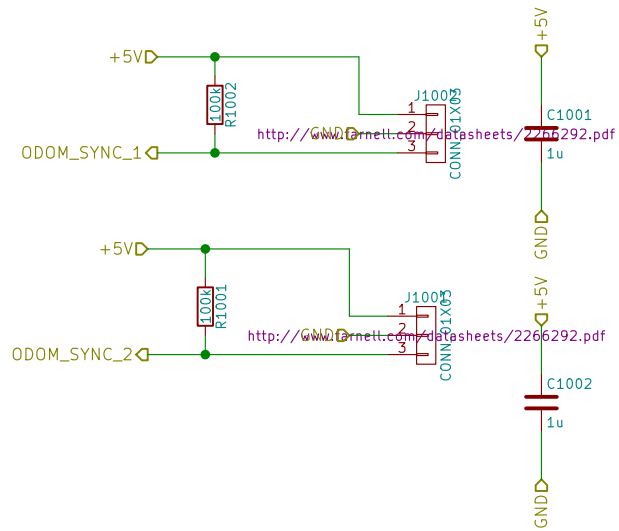




Entwickler: Adrian Wilhelm
Assystem Germany GmbH | Gutenbergstraße 15, 10587 Berlin (Germany)
Sheet: /bluetooth/
File: bluetooth.sch

| | | |
|--------------------------------------|------------------|----------|
| Title: ECU-STM Breakout Board | | |
| Size: A4 | Date: 2017-06-22 | Rev: 2.2 |
| KiCad E.D.A. kicad 4.0.4-stable | | Id: 8/14 |





Entwickler: Adrian Wilhelm

Assystem Germany GmbH | Gutenbergstraße 15, 10587 Berlin (Germany)

Sheet: /odomTrigger/

File: odomTrigger.sch

Title:

Size: A4

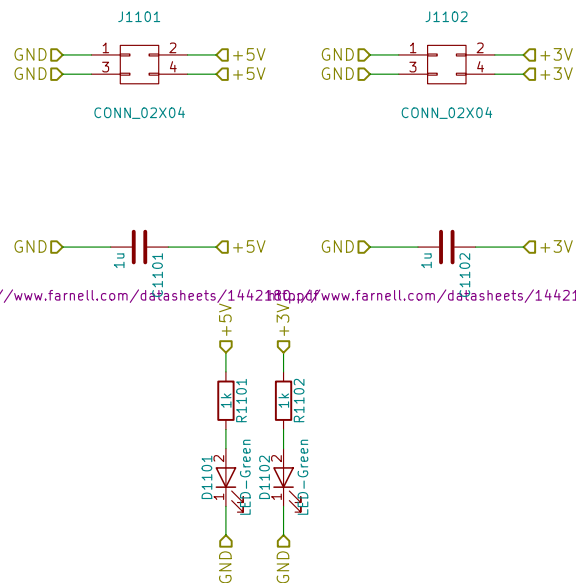
Date: 2017-06-22

Rev: 2.2

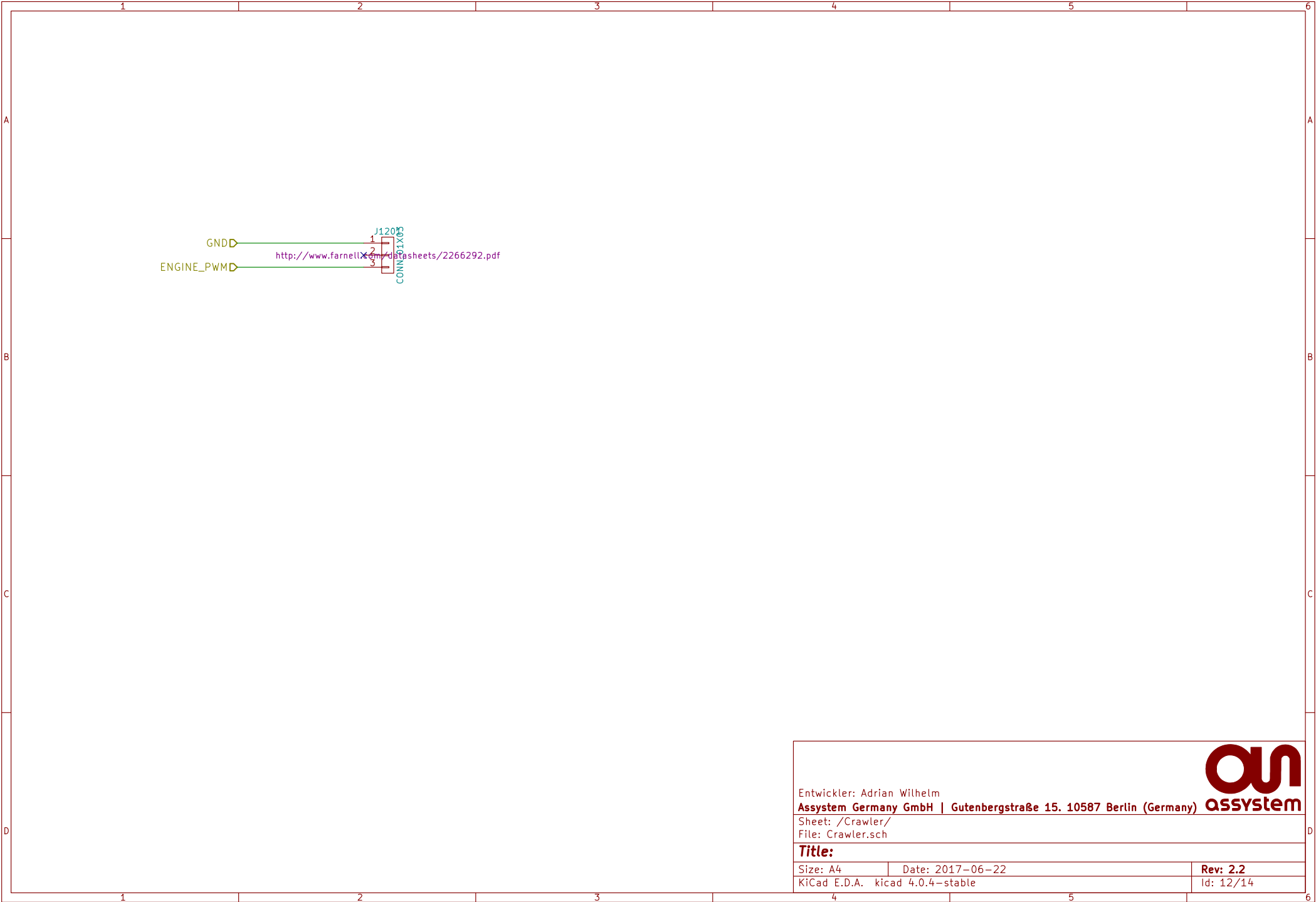
KiCad E.D.A. kicad 4.0.4-stable

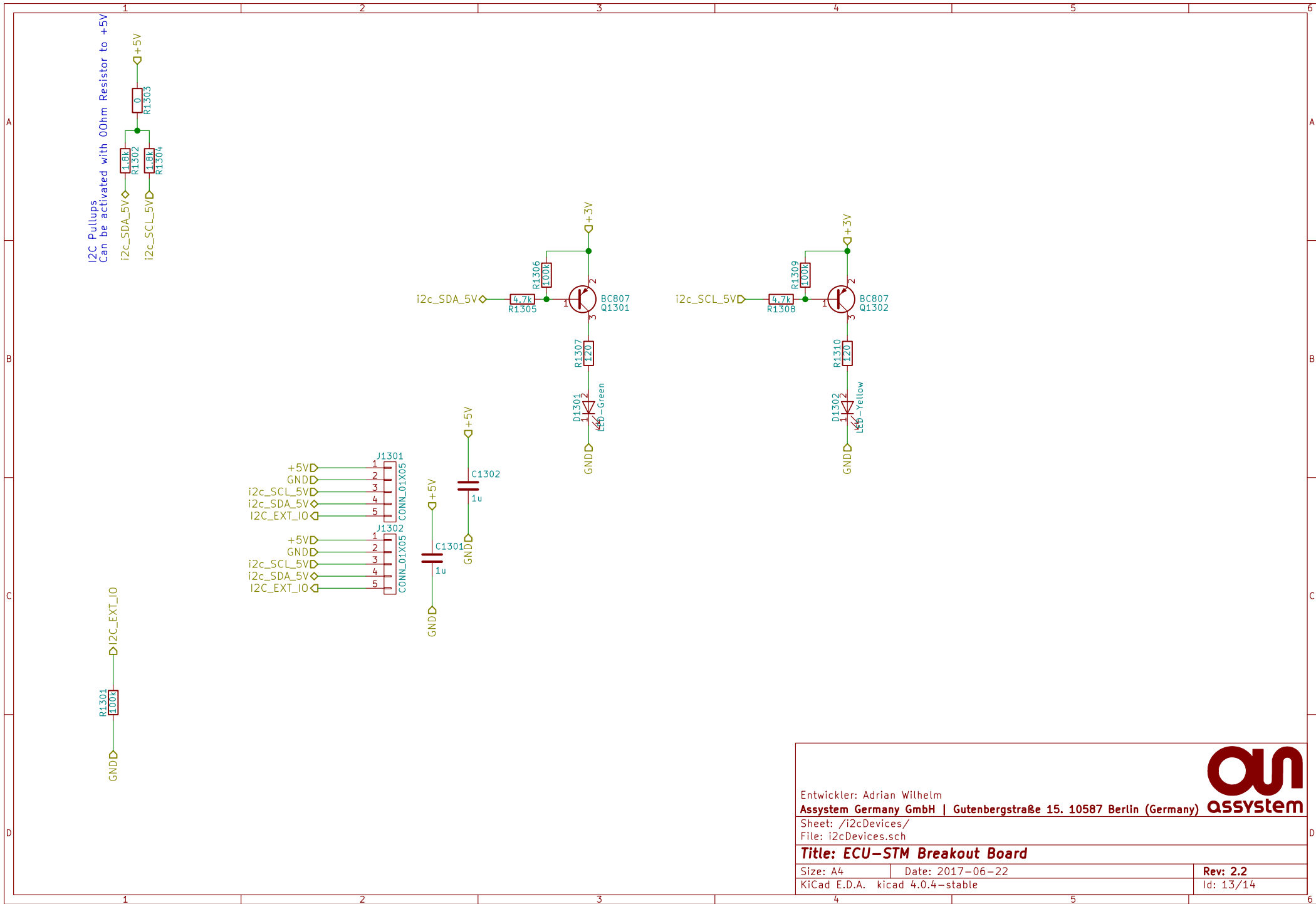
Id: 10/14





| | | |
|--|------------------|-----------|
| <div> <div> <div>an</div> <div>assystem</div> </div> </div> | | |
| Entwickler: Adrian Wilhelm | | |
| Assystem Germany GmbH Gutenbergstraße 15. 10587 Berlin (Germany) | | |
| Sheet: /powerOut/ | | |
| File: powerOut.sch | | |
| Title: | | |
| Size: A4 | Date: 2017-06-22 | Rev: 2.2 |
| KiCad E.D.A. kicad 4.0.4-stable | | Id: 11/14 |





Entwickler: Adrian Wilhelm

Assystem Germany GmbH | Gutenbergstraße 15, 10587 Berlin (Germany)

Sheet: /i2cDevices/

File: i2cDevices.sch

Title: ECU-STM Breakout Board

Size: A4

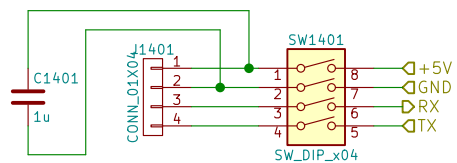
Date: 2017-06-22

KiCad E.D.A. kicad 4.0.4-stable

Rev: 2.2

Id: 13/14





Sheet: /IMU/
File: IMU.sch

Title:

Size: A4
KiCad E.D.A. kicad 4.0.4-stable

Date:

Rev: 2.2
Id: 14/14